

## Standox 2K Crystal Clear K9035



**Standox 2K Crystal Clear K9035 is a high-quality 2K clearcoat in an aerosol can, and is perfect for headlight refinishing. It is characterized by its particularly user-friendly application and its short drying times.**

- Fast drying.
- Good gloss and topcoat holdout.
- Outstanding topcoat holdout.
- Part of the Standox headlight repair kit.

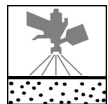


# Standex 2K Crystal Clear K9035

## Product preparation - application STANDARD

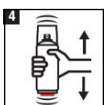
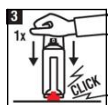
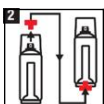
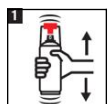


It is strongly recommended to use appropriate personal protection equipment during application to avoid respiratory, skin and eye irritation.



Standoblue Basecoat / Standohyd Plus Basecoat: Surfaces must be dried / flashed-off in accordance with TDS before application

Standex Basecoat: Surfaces must be dried / flashed-off in accordance with TDS before application



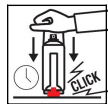
1.Shake before use. (at least 2 minutes)

2.Remove the red button from the cap and position it in the activation valve at the bottom of the can.

3.Place the spray can on a hard surface. Apply downward pressure to activate the spray can.

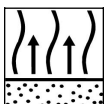
4.Shake the aerosol can once again for at least two minutes after activation.

Make a spray test after shaking.



Pot life at 20°C: 12 hr

Shake well again prior to each use.



2 coats

with intermediate flash-off: 5 min - 10 min  
final flash-off: 10 min



60 - 65 °C

20 min - 30 min

20 °C

12 hr - 16 hr



Guideline for short wave IR equipment

Half power: 5 - 7 min

Full power: 8 - 10 min

VOC compliant

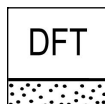
2004/42/IIB(e)(840) 640: The EU limit value for this product (product category: IIB(e)) in ready to use form is maximum 840 g/l of VOC. The VOC content of this product in ready to use form is maximum 640 g/l.

# Standex 2K Crystal Clear K9035

## Products

Standex 2K Crystal Clear K9035

35 - 45 µm 2 coats

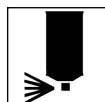


### Theoretical coverage

150 m<sup>2</sup>/l at 1 micron dry film thickness

Due to different hardener characteristics and different mixing ratios of the ready-to-use mixture in some TDS versions, the theoretical coverage calculation may vary.

Note: The practical material consumption depends on several factors, e.g. geometry of the object, surface formation, application method, spray gun setting, inlet pressure, etc.



After use, hold aerosol can upside down and spray briefly to clean nozzle.

## Remarks

- Material has to be at room temperature (18-25°C) before use.
- Allow additional time for preheating up to panel temperature.
- IR drying is not allowed for headlight repairs.
- Application distance to the substrate should be 15 until 25 cm.

Consult Safety Data Sheet prior to use. Observe the precautionary notices displayed on the container.

All other products referred to in the refinish build up are from our Standox product range. System properties will not be valid when the related material is used in combination with any other materials or additives which are not part of our Standox product range, unless explicitly indicated otherwise.

For professional use only! The information provided in this documentation has been carefully selected and arranged by us. It is based upon our best knowledge on the subject at the date of issuance. The Information is given for information purposes only. We are not liable for its correctness, accuracy and completeness. It is up to the user to check the information with regard to up-to-dateness and suitability for his intended purpose. The intellectual property in this Information, including patents, trademarks and copyrights, is protected. All rights reserved. The relevant Material Safety Data Sheet and Warnings displayed on the product label need to be observed. We may modify and/ or discontinue operation of all or portions of this Information at any time in our sole discretion, without notice and assume no responsibility to update the Information. All rules set forth in this clause shall apply accordingly for any future changes and amendments.

