

Standex SprayMax 2K Express Filler



Standex SprayMax 2K Express Filler is an isocyanate-free 2K filler that comes in a handy spray can. It was developed especially for use with Standohyd Basecoats and is ideally suited to smaller repairs.

- Fast drying.
- Easy to sand.
- Long pot life.
- Two to three spray passes.
- Suitable for small repairs.

The familiar Standox quality in a spray can.

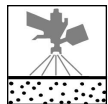


Standex SprayMax 2K Express Filler

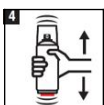
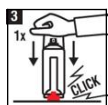
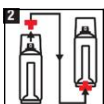
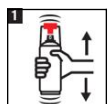
Product preparation - application STANDARD



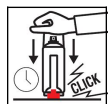
It is strongly recommended to use appropriate personal protection equipment during application to avoid respiratory, skin and eye irritation.



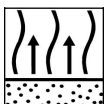
Bare steel sanded and cleaned
Galvanised steel or soft aluminium sanded and cleaned.
Old or original paintwork well sanded and cleaned.



- 1.Shake before use. (at least 2 minutes)
 - 2.Remove the red button from the cap and position it in the activation valve at the bottom of the can.
 - 3.Place the spray can on a hard surface. Apply downward pressure to activate the spray can.
 - 4.Shake the aerosol can once again for at least two minutes after activation.
- Make a spray test after shaking.



Activated: 1 day



2 - 3 coats

final flash-off: 5 min - 10 min



20 °C

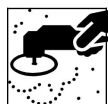
1 hr - 1 hr 30 min

60 - 65 °C

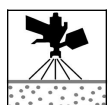
20 min - 25 min



Guideline for short wave IR equipment
Half power: 2 min
Full power: 8 min



P500 - P600



Standohyd Plus Basecoat / Standohyd Plus Transformer 8100
2K Topcoat

VOC compliant

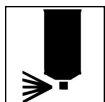
2004/42/IIB(e)(840) 630: The EU limit value for this product (product category: IIB(e)) in ready to use form is maximum 840 g/l of VOC. The VOC content of this product in ready to use form is maximum 630 g/l.

Standex SprayMax 2K Express Filler

Products

Standex SprayMax 2K Express Filler

50 - 80 µm



After use, hold aerosol can upside down and spray briefly to clean nozzle.

Remarks

- Material has to be at room temperature (18-25°C) before use.
- Application distance to the substrate should be 15 until 25 cm.

Consult Safety Data Sheet prior to use. Observe the precautionary notices displayed on the container.

All other products referred to in the refinish build up are from our Standox product range. System properties will not be valid when the related material is used in combination with any other materials or additives which are not part of our Standox product range, unless explicitly indicated otherwise.

For professional use only! The information provided in this documentation has been carefully selected and arranged by us. It is based upon our best knowledge on the subject at the date of issuance. The Information is given for information purposes only. We are not liable for its correctness, accuracy and completeness. It is up to the user to check the information with regard to up-to-dateness and suitability for his intended purpose. The intellectual property in this Information, including patents, trademarks and copyrights, is protected. All rights reserved. The relevant Material Safety Data Sheet and Warnings displayed on the product label need to be observed. We may modify and/ or discontinue operation of all or portions of this Information at any time in our sole discretion, without notice and assume no responsibility to update the Information. All rules set forth in this clause shall apply accordingly for any future changes and amendments.

